

National report of Slovakia 2012

Branislav DROŠČÁK, Miroslav ROHÁČEK, Dušan FERIANC ¹⁾,
Ján HEFTY ²⁾

1) Geodetic and Cartographic Institute Bratislava

2) Slovak University of Technology in Bratislava, Faculty of Civil Engineering,
Department of theoretical Geodesy

EUREF 2012, annual symposium
6-8.june 2012, Paris, France



Outline

- Activities related to *EPN*
- National Reference Frames - positioning
 - *SKPOS* – Slovak real time positioning service
- National Reference Frames - heights
 - National Height System - Bpv
- Gravity activities
- Geodynamics

Activities related to EPN

4 EPN stations

MOPI

- from: 1996
- GPS only
- admin: SUT



EUREF Permanent Network

NETWORK & DATA	PRODUCTS & SERVICES	DOCUMENTATION
<ul style="list-style-type: none"> Maps, Tracking status, etc. Proposed sites, Site log Site picture submission 	<ul style="list-style-type: none"> Data analysis, Weekly EPN solutions, Coordinates, Time series, Tropospheric delays, ETR589/ITRS transformation 	<ul style="list-style-type: none"> Formats, Guidelines, Equipment & calibration, Papers, FAQ

GANP

- from: 2003
- GNSS
- frek.: L1,L2,L5
- IGS/EPN
- **SKPOS**
- admin: GKU



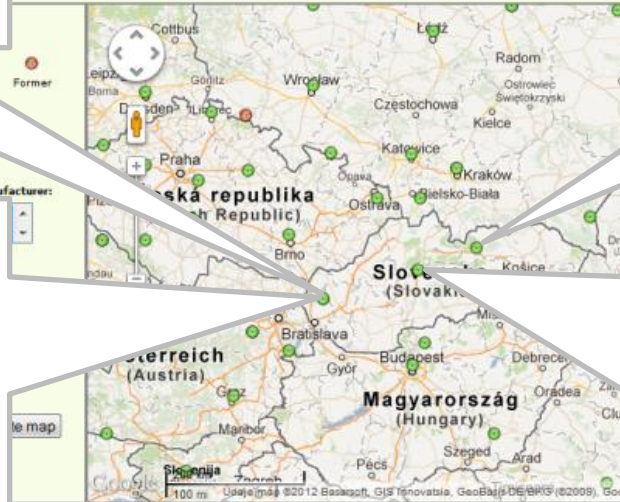
MOP2

- from: 2008
- GNSS
- **SKPOS**
- admin: SUT



BBYS

- from: 2007
- GPS only
- admin: GKU+TOPU



Activities related to EPN EUREF-IP (2 stations)

Legend

- Active (Green circle)
- Inactive (Orange circle)
- Corrupt (Red circle)

Site selection on map

- Select a station -

Site criteria selection

Receiver type: AOA, ASHTECH, JAVAD, JPS

Format: RTCM 2.1, RTCM 2.2, RTCM 2.3, RTCM 3.0

System: GPS, GLO, GAL, SBAS

Active: Yes, No, All

Corrupt: Yes, No, All

Last update : May 28, 2012 11:24 UTC

- **GANP (active)**
 - RTCM 3.0

- **MOP2 (inactive)**
 - RTCM 3.1

REAL-TIME



ACCESS : free, using [Ntrip](#)

AVAILABLE FROM

ASI ([broadcaster](#), [registration](#))

GANP0 : RTCM 3.0
(1004(1),1006(10),1008(10),1012(1),1013(10),1033(10))

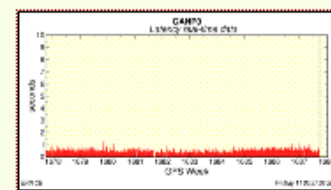
BKG ([broadcaster](#), [registration](#))

GANP0 : RTCM 3.0
(1004(1),1006(10),1008(10),1012(1),1013(10),1033(10))

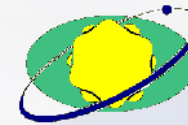
ROB ([broadcaster](#), [registration](#))

GANP0 : RTCM 3.0
(1004(1),1006(10),1008(10),1012(1),1013(10),1033(10))

DATA LATENCY

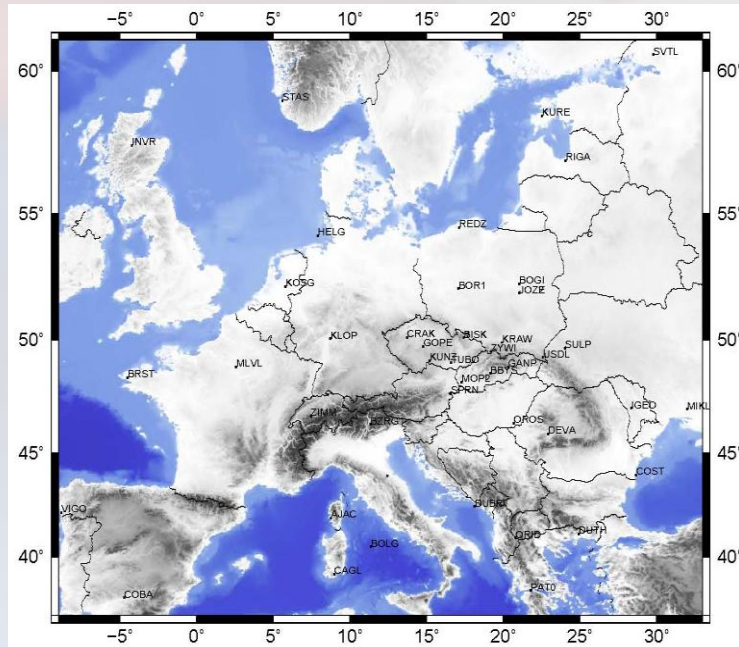


Activities related to EPN



LAC SUT

Local Analysis Center of Slovak University of Technology



Current network configuration (out of boundary: REYK, QAQ1)

- Standard continual processing of EPN subnetwork
- Future planned: extension of network
 - 5 stations (Croatia, Serbia)

PROCESSING STRATEGY

Software	: Bernese GPS Software, version 5.0
Orbits and EOPs	: IGS final
Observations	: GPS
Elevation Cutoff	: 3°
Antenna PCV Model	: absolute
Ambiguity Resolution	: QIF
Troposphere	: dry Niell (a priori), wet Niell (estim.), gradients
Ocean Loading	: FES2004
Reference Frame	: IGS05 / IGS08 (since week 1632)
Reference Point	: BOR1
Products submitted	: SUTWWWW7.SNX weekly snx file SUTWWWWN.SNX daily snx file SUTWWWWN.TRO daily troposphere solution

ALL PROCESSING OUTPUTS

Daily solution	: CRD, COV, SNX, ION, INX, TRO, TRP
Weekly combination	: CRD, COV, SNX, OUT, SUM
4-hour solution	: CRD, COV

National reference frames

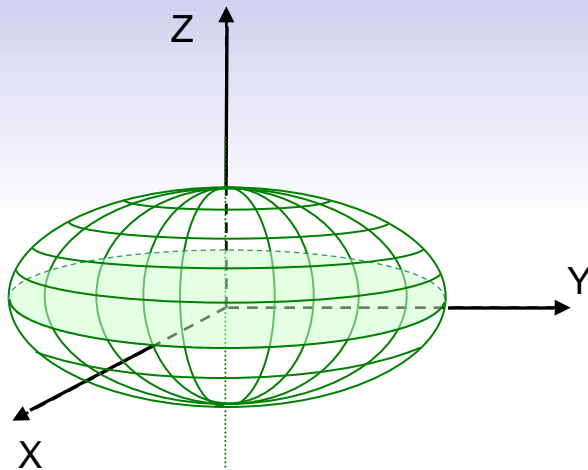
Positioning

7 Helmert transformation parameters (2 sets)

3 translations + 3 rotations + Scale factor = 0 (1m = 1m on both ellipsoids)

Spatial coordinates (XYZ or $\varphi\lambda h$)

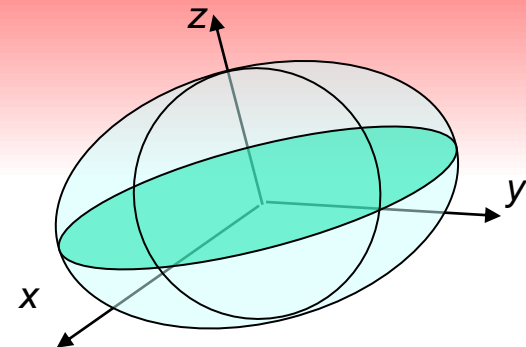
ETRS89 system
SKTRF2009 = ETRF2000 (epoch 2008.5)



- **GRS80 ellipsoid**
- physical representation: National Spatial Network

Plane coordinates (X,Y)

S-JTSK system
JTSK03 realization

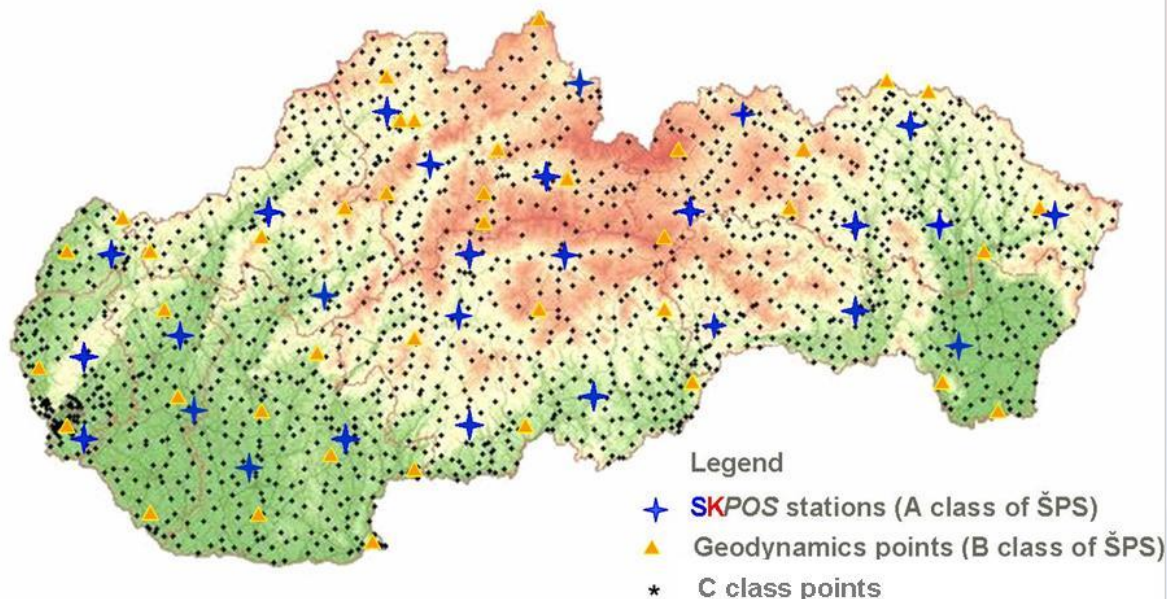


- **Bessel 1984 ellipsoid + Křovák projection**
- physical representation: National Spatial Network

National spatial network

ETRS89 & JTSK03 physical representation

- Active part (permanent stations) – **A class** (**SKPOS**)
- Passive part (stabilized points)
 - **B class** – points for geodynamical research (Hz 5-6mm, V 12-15mm)
 - **C class** – reference points (Hz 1cm, V 2cm)
 - **D class** – other points with ETRS89 coordinates (Hz 3cm, V 5.5cm)

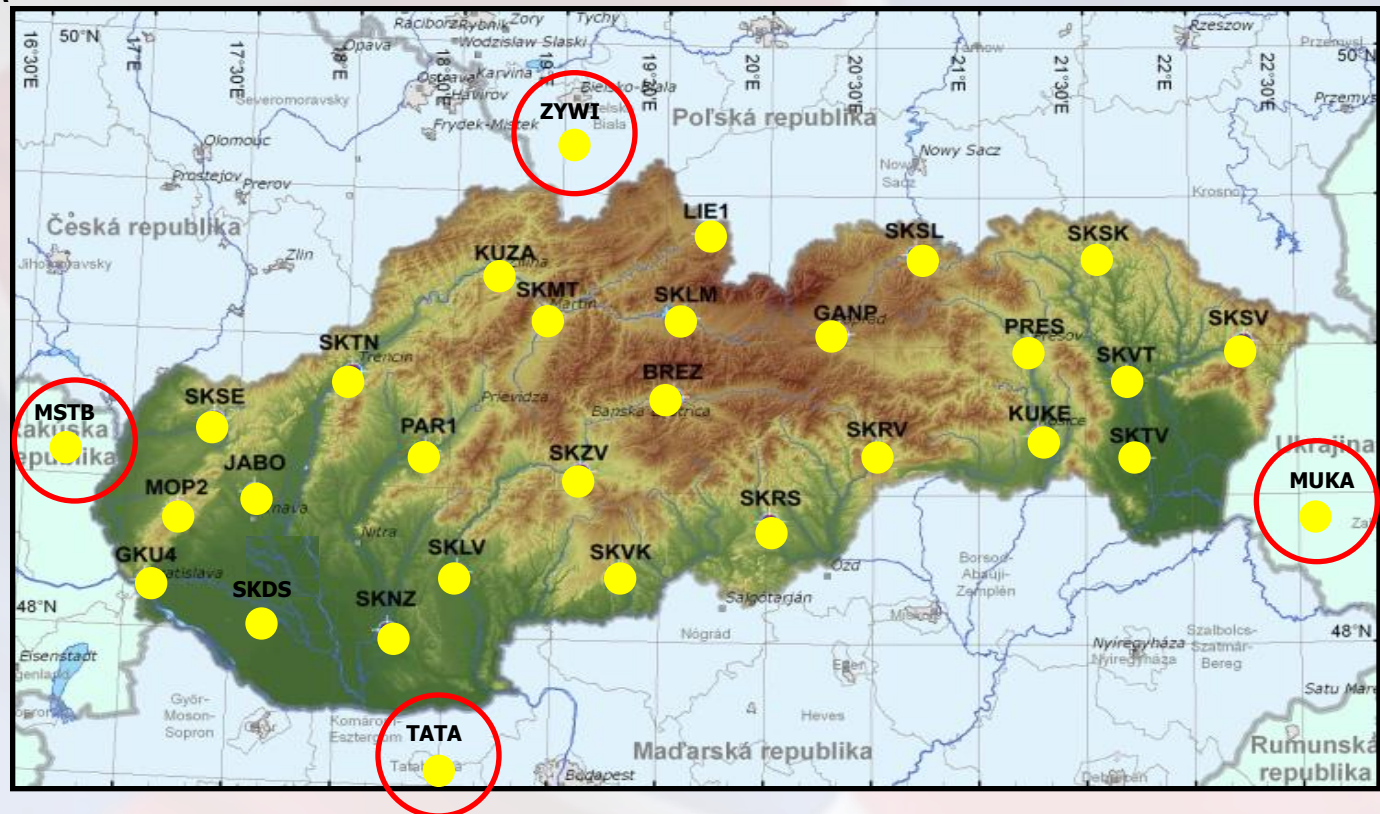


ŠPS class	Number of points
A	27
B	71
C	1 650
D	2 900

Foreign permanent station introduction

- **11.11.2011** - 4 foreign permanent station was introduced into SKPOS solution
 - Hungary: TATA
 - Poland: ZYWI
 - Ukraine: MUKA
 - Austria: MSTB

- **30 permanent stations**
all
GPS+GLONASS



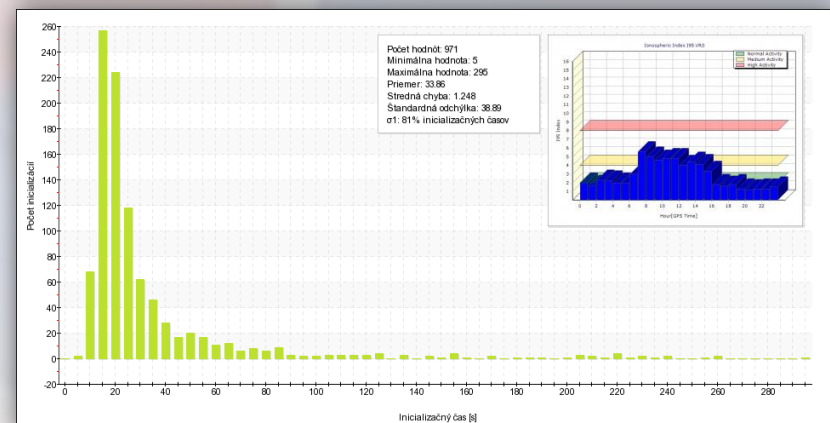
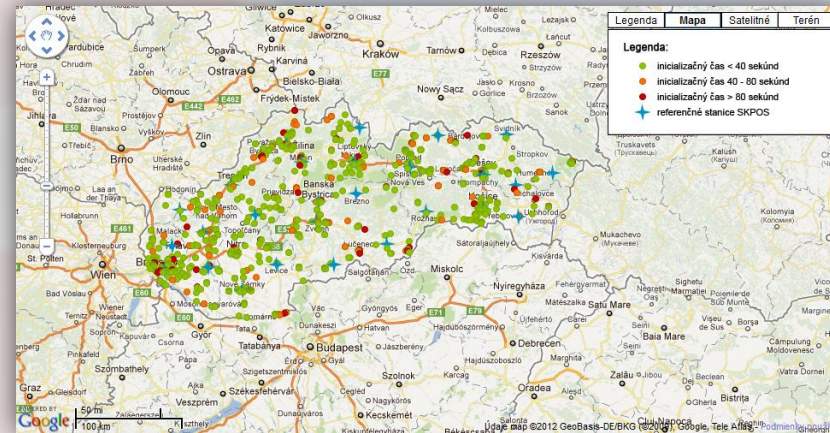
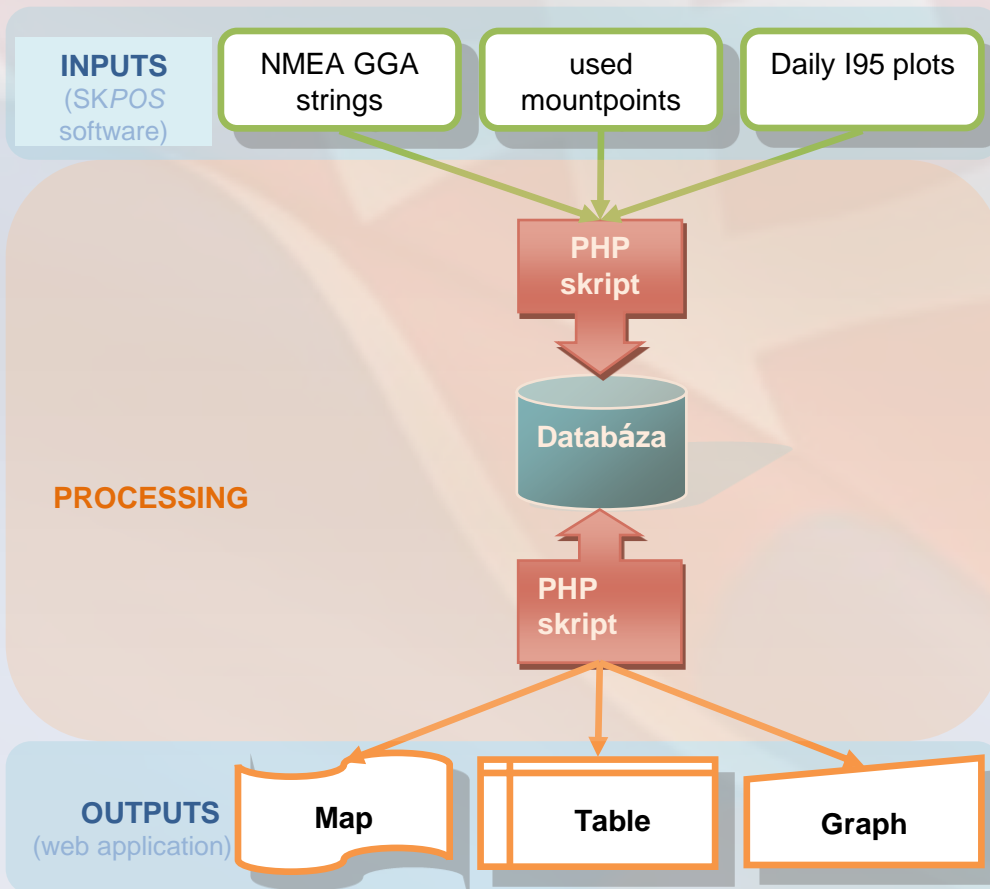
A decorative graphic in the top-left corner consisting of a black crosshair overlaid on a red-to-blue gradient square.

users, field of applications, charges

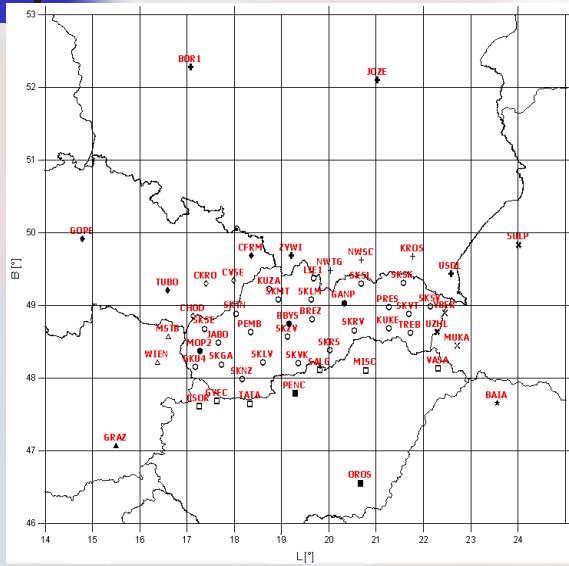
- Number of users (registrations)
 - **750 users** - status in May 2012
 - 650 users – status in November 2011
- Field of applications
 - 98% - surveying, cadastral, cartography geodesy and GIS
 - 2% - precise farming etc.
- RTK service - charges
 - flat rate **90 EUR** per technical year (365 days from the date of registration)

New application for SKPOS users monitoring

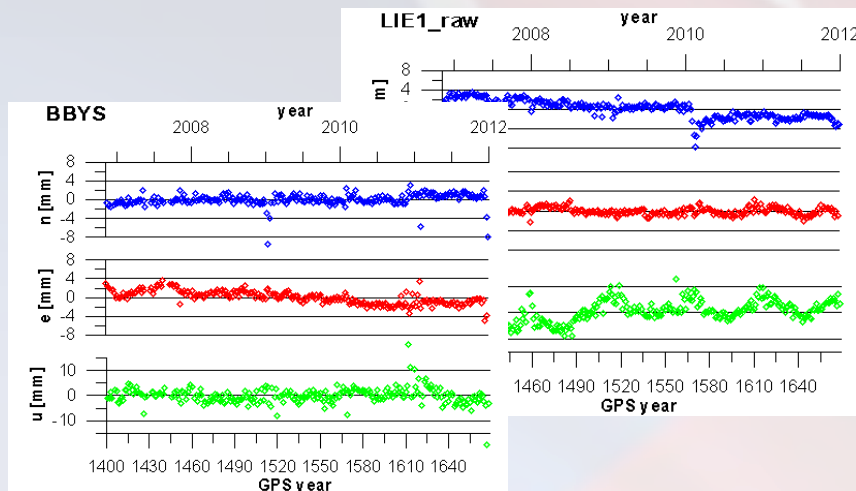
- serve for administrator to monitor RTK users performance e.g. we can monitor users performance and its dependence on Ionosphere



Computations, data processing, time series



- Daily solution + weekly combination in Bernese 5.0
- 60 permanent stations processed together (SKPOS + EPN + border stations)
- IGS08 ephemeris (from GPS week 1632)
- ETRF2000 coordinates
 - *Memo* document - transformation parameters from ITRF2008 to ETRF2000
- Time series
 - raw
 - clean (without jumps)



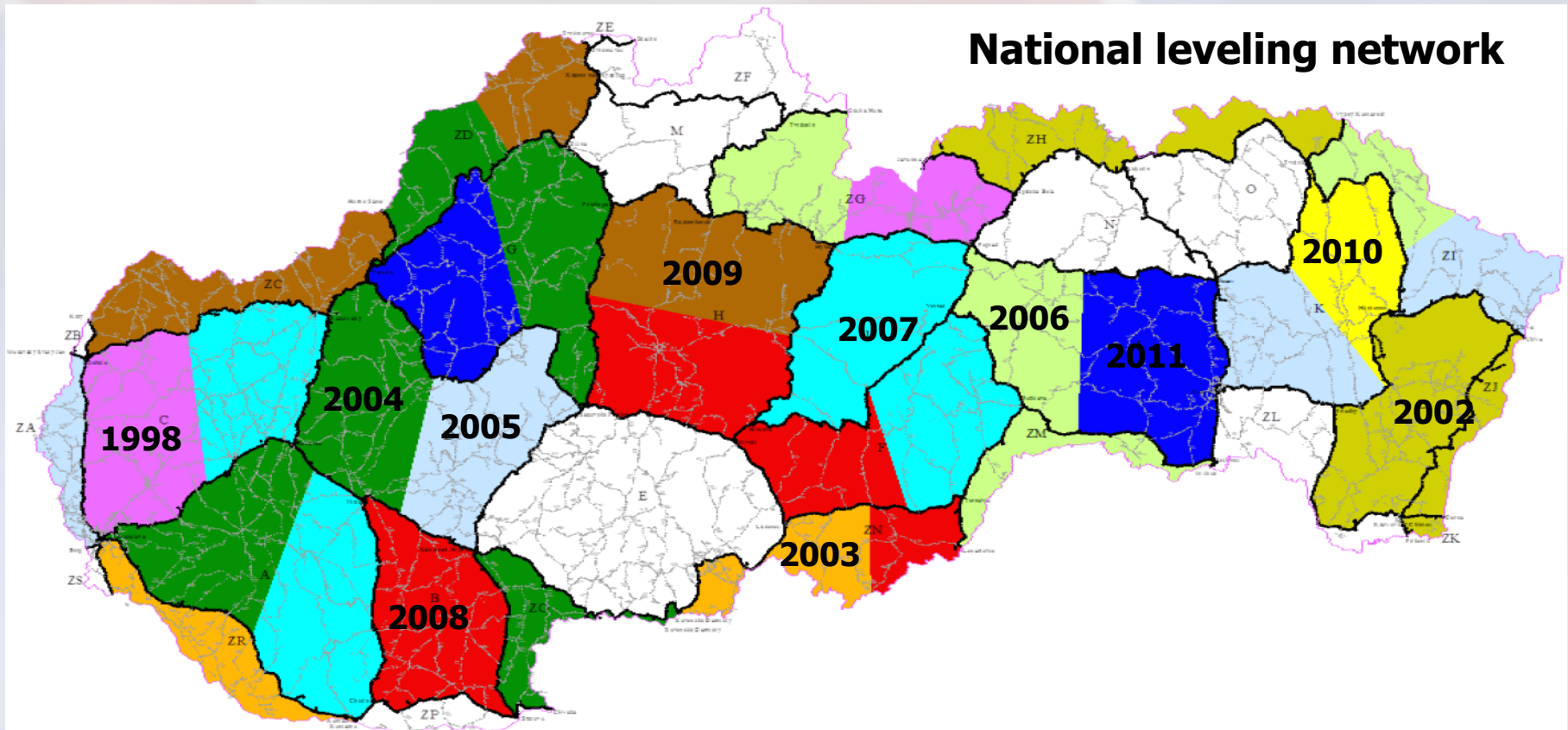
National reference frames

Height System

- National Height system is **Balt** with Bpv realization (Balt after adjustment)
- New Challenge for future = **new Bpv realization** & **new national EVRS realization**
 - Measurement:
 - remeasuring of all leveling lines of National Leveling Network
 - 1st order lines measured during 1997-2003
 - 2nd order leveling lines measured 2003-2015
 - Adjustment:
 - 1st order leveling lines separate adjustment
 - 2nd order tied to 1st order results

2nd order leveling lines measurement graphics

- In 2011 - Totally measured – 577 km
- 60% of all 2nd order leveling lines done now

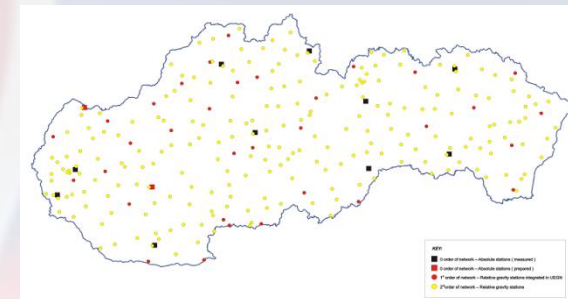


Gravity activities

National gravity network (ŠGS)

Status in 2012

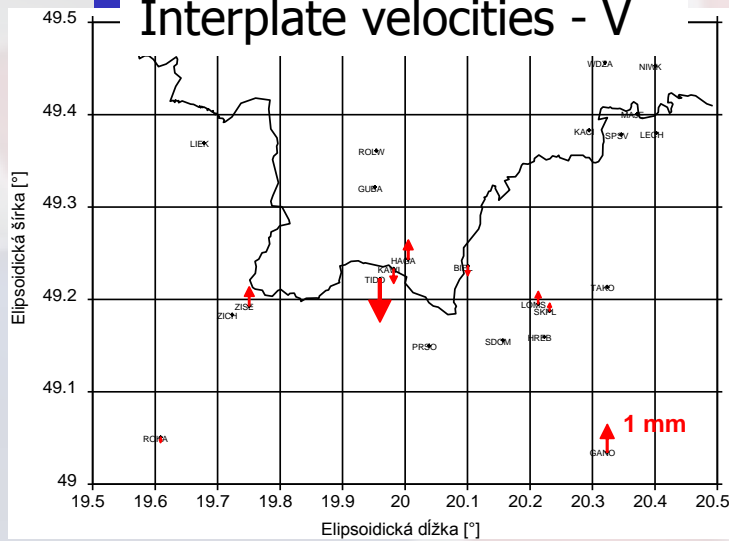
- 0.order ŠGS
 - 11 points (absolute measurement)
- 1.order ŠGS
 - 30 points
- 2.order ŠGS
 - 246 points
- 3.order ŠGS
 - over 1500 points



Geodynamics

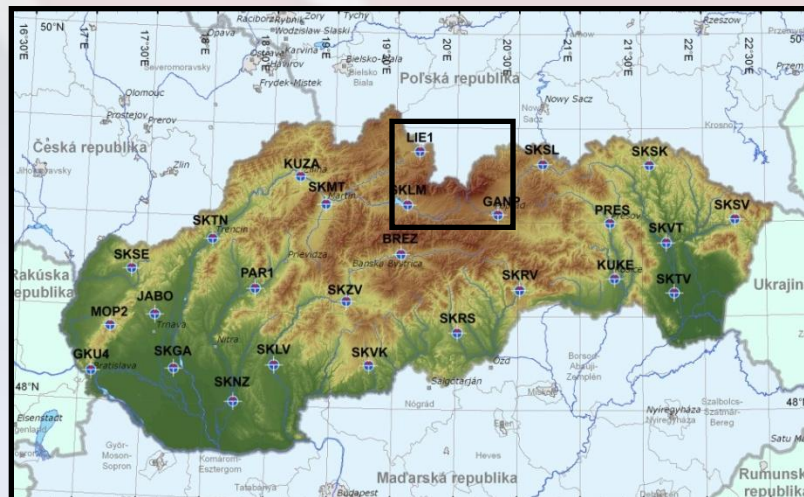
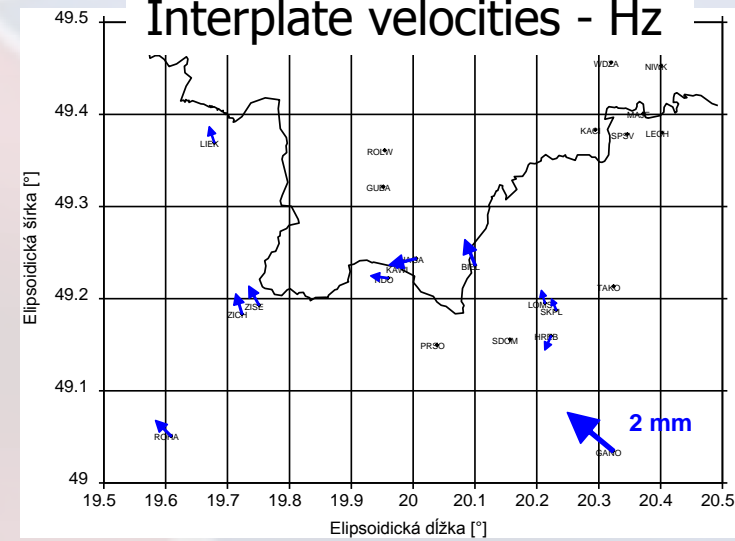
Local geodynamic network TATRY

Interplate velocities - V



- campaign measurement (96 hours)
- every year from 1998
- 1998-2011
- cooperation with Poland

Interplate velocities - Hz





Thank you
for your attention